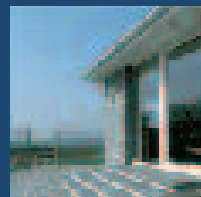
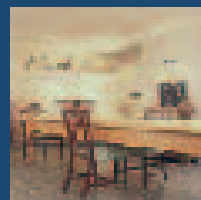
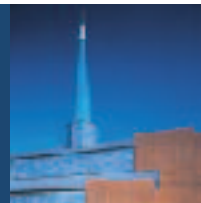


C O R N I S H

DELABOLESLATE

The Natural Choice

six centuries of quality craftsmanship



The Delabole Slate Company



traditional products for the modern age

The Delabole Slate Company

The great versatility and durability of Delabole Slate as a building stone was almost certainly discovered over 1000 years ago when medieval homesteaders built the "Deliou Manor", (mentioned in the Domesday book of 1086).

Quite apart from marking the birth of the now famous Delabole Slate Quarry, it is possible these early builders also invented the "Roof Slate", as they found the stone split easily into large thin sheets.



fireplaces

The company still produces traditional and hand crafted products to this very day, many to individual customer requirements.

The extremely durable slabs, still produced on large frame saws, are fashioned by our own Delabole craftsmen to suit your own personal needs for hearths, mantles, worktops, tables, flooring or window sills, to name but a few

work surfaces

Delabole Slate frame sawn slabs have graced the bathrooms, pantries, kitchens and floors of great mansions and quaint country cottages alike for centuries.



Delabole slate paving is an economical means of laying weed-free walkways, from domestic patios to commercial pedestrianisation schemes.

Acknowledged for centuries because of its durability, Delabole blue/grey paving will withstand the most rigorous usage. Rustic paving is a colourful alternative, suitable for domestic use, and "light traffic" areas.



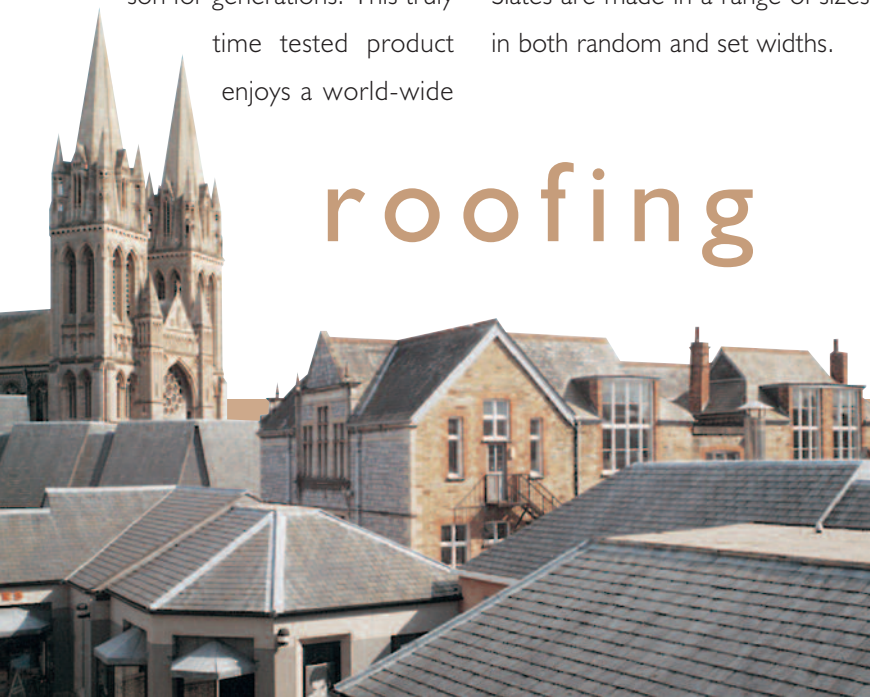
delastone

Blue/grey Delastone is a naturally attractive building stone that adds character and distinction to any building. The subtle colour is pleasing to the eye and complements any architectural style. Its strength and

versatility makes Delastone ideal for both internal and external features. Applications are limited only by the imagination of the designer!



Possibly the first and finest roofing slate ever made, Delabole roof slates are still hand made by Cornish craftsmen, using skills handed down from father to son for generations. This truly time tested product enjoys a world-wide reputation for its lasting qualities. Whilst exceeding all the durability requirements of BS680, Delabole roof slates retain all their traditional features. Slates are made in a range of sizes in both random and set widths.



roofing

SLATES

nameplates

Delabole slate name and numberplates provide a distinctive, personalised feature for any residence. They are made-to-order, and available in various different styles, colours, and letter-engravings. Delabole slate has been used for tombstones from the days of Elizabeth I, and many excellent



examples of this can be seen in Cornish churchyards, with inscriptions still legible after several centuries exposure.

sills

Forget about rotting window sills! – Delabole slate slabs provide the perfect practical solution. Appropriately finished for either inside or outside use, the natural colour will complement stone



and rendering of any kind. Cut-to-size, Delabole sills are easily installed, and once in place are maintenance free and virtually everlasting.



Delabole slate flooring not only looks beautiful, it will last a lifetime. Specified by architects and designers for every conceivable application, slate floors will also transform

domestic kitchens, bathrooms and hallways. Delabole slab flooring will add style and sophistication to buildings old and new.

SLABS

flooring-slabs



Traditional hand-crafted floor tiles are available in either riven or fine rubbed finish, Delabole slate tiles have become increasingly fashionable for both commercial and domestic use. "Riven" tiles are hand-split along the grain of the slate to expose a naturally textured surface. Delabole floor tiles are boxed in various standard sizes, and can be laid to create patterns to suit.

flooring-tiles



Delabole Slate has been used as a building material for well over 600 years, and has been quarried continuously since the early 17th century, when Carew in his survey of Cornwall wrote "in substance



Gaverne where it would be loaded onto vessels moored in the harbour area. It would take thirty wagons, pulled by over a hundred horses to load a sixty ton ship, and as late as 1890, women still assisted with the stowing of slates.

In 1841, the five quarries formed themselves into a single controlled unit, and in 1842, the Old Delabole Slate Company was formed, becoming the present Limited liability company in 1898.

In 1977 the quarry moved into corporate hands, but this era was short lived and in June 1999 a management buy-out returned the quarry to local ownership.

Today, by applying modern mining techniques and utilising only five skilled quarrymen, an average of 120 tonnes of slate block is still quarried each day. Using the latest diamond wire saws, 300 tonne blocks are sawn from the quarry face, eliminating the age-old method of blasting. Wire sawing improves recovery, thus preserving for the future years valuable reserves of slate, and finally laying to rest the historic building of waste mountains.

Alongside these technological developments there remains no substitute for the skill and experience of the traditional Cornish craftsman.

history

thin, in colour fair, weight light, in lasting long and generally carrieth good regard".

The quarry is 425 feet deep and more than a mile and a half in circumference, and provides a quality of slate that is exceptional.

During the reign of Elizabeth I, the five quarries that existed within the vicinity of the present pit, assumed considerable importance, delivering slate "throughout the realm, and even exporting it by sea to Brittany and the Netherlands".

In 1859, in Murray's Handbook of Devon and Cornwall, the author wrote "the quarries present one of the most astonishing and animated scenes imaginable". About 1,000 men were employed at this time, raising an average of 120 tonnes of slate per day. Long before the coming of the railway, the slate was cut and hauled six miles to Port

**Tours available
Monday to
Friday,
May to
September.**

Contact:
Pamela Free
for more
information



C O R N I S H

DELABOLESLATE
The Natural Choice

THE DELABOLE SLATE COMPANY,
PENGELLY, DELABOLE, CORNWALL, PL33 9AZ.

TEL: (01840) 212242
FAX: (01840) 212948

EMAIL: info@delaboleslate.com
WEB: www.delaboleslate.com



There's no substitute for the real thing!



Printed on
Re-cycled Paper

produced by SKDA, 01208 832190

Delabole Slate is a privately owned Cornish company